



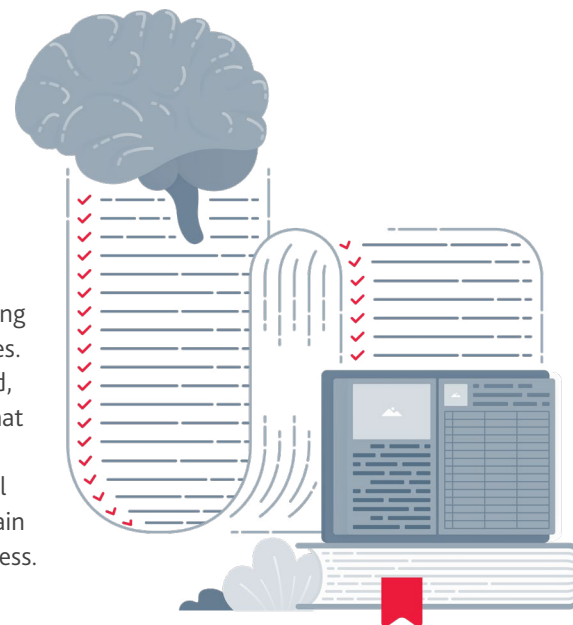
TRAINING DATA GENERATOR

BY BDO DIGITAL LABS

PHYSICS-BASED 3D SYNTHETIC IMAGE DATA GENERATOR FOR AI MODEL TRAINING FOR OBJECT DETECTION TASKS

OVERVIEW

A physics-based 3D synthetic image data generator is a tool that auto generates training data for machine learning models using consistently labeled photo-realistic images files. Machine learning requires a massive amounts of data which can be costly, complicated, and time-consuming to collect and manually label. Not to mention the many errors that real-world image data contains as well as poor variance distribution and associated variety of contextual environment in which objects to be detected are found in the real world. Producing physic-based 3D synthetic photo-realistic image data solves these pain points, and helps machines to learn to make better predictions that benefit your business.



BENEFITS

- ▶ **Data quality** - real-world data is vulnerable to human errors, inaccuracies, and biases. You can place confidence in the data you use with physics-based 3D synthetic image data generation and consistently labeled images.
- ▶ **Scalability** - the demand for training image data is increasing. Soon, companies will have no choice but to use synthetic image data. It can be adapted to fit the training needs of increasingly deep and complex machine learning models for high accuracy machine vision tasks.
- ▶ **Ease of use** - synthetic data is simple to generate and use. Having the ability to generate large training datasets with no manual labeling of data saves time. Eliminating errors and inaccuracies in datasets helps to create uniform formats and labeling.

WHY BDO DIGITAL

BDO Digital has a team of highly trained, experienced data scientists who use the latest and greatest technology to provide the best services and solutions. Training Data Generator helps data scientists by providing high-quality synthetic data that complies with data privacy regulations that can be used safely for training or testing purposes.